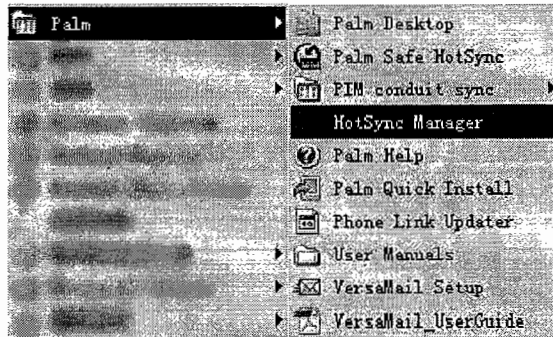


5. Install Flowmeter Software on PDA

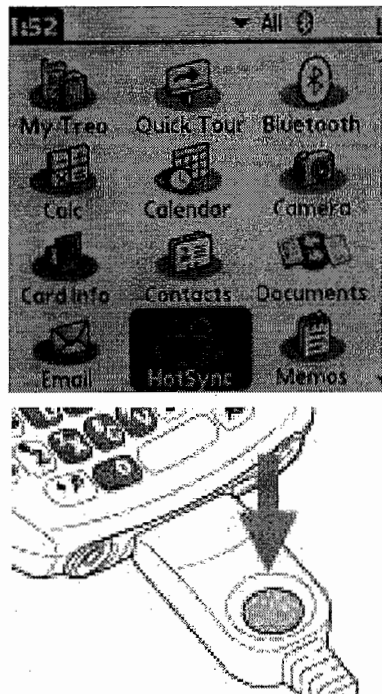
Note: Read this section before reinstalling the PDA program.

To install communication software (take Palm 680 as an example) using the HotSync Manager of the PDA , follow the following steps:

1. Install Palm Desktop (take PalmDesktopWin62EN as example) to your computer. For details.
2. Connect the PDA to your computer with USB sync cable.
3. Run Palm Desktop, and select [HotSync Manager].



4. Click the HotSync icon of the PDA or press the HotSync key on the sync jack and install the application according to the clue.



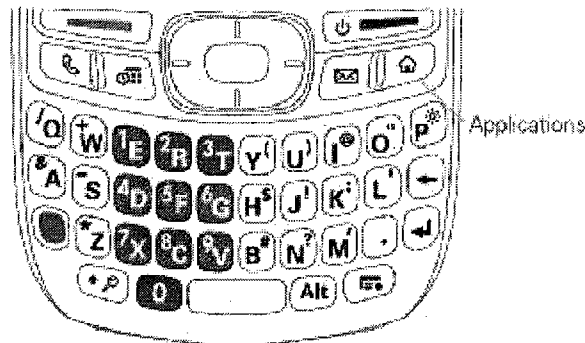
5. Run Palm Desktop, and select[Palm Quick Install]

Supplementation of Innova-Sonic Model 210 Instruction Manual

Note: This supplementation is used for the operation of the upgraded Palm 680 model PDA.

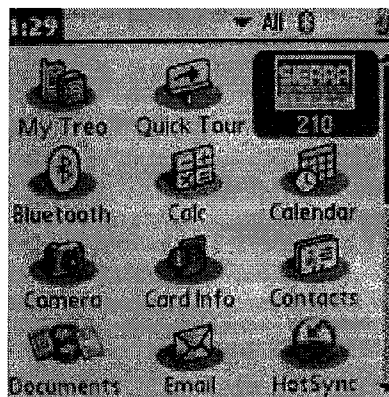
Updated Information:

1. The **【HOME】** button mentioned on Page19 of 210 Instruction Manual, now in Palm 680 will be displayed as below symbol, see the picture:

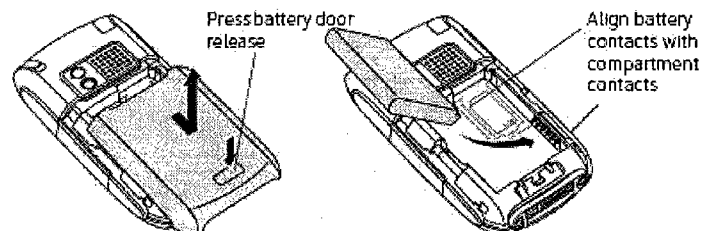


Pressing that button will back to Palm 680 “APPLICATIONS ICON” interface.

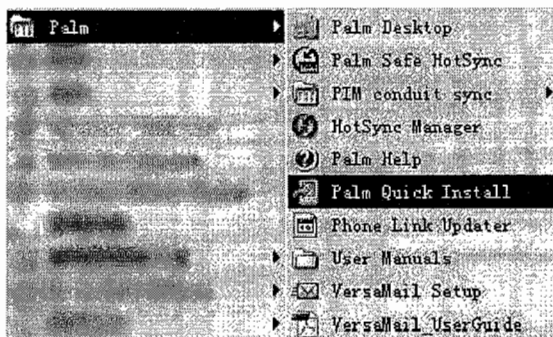
2. Under Palm 680 APPLICATIONS ICON, select SIERRA 210 program to start the flow meter operation:



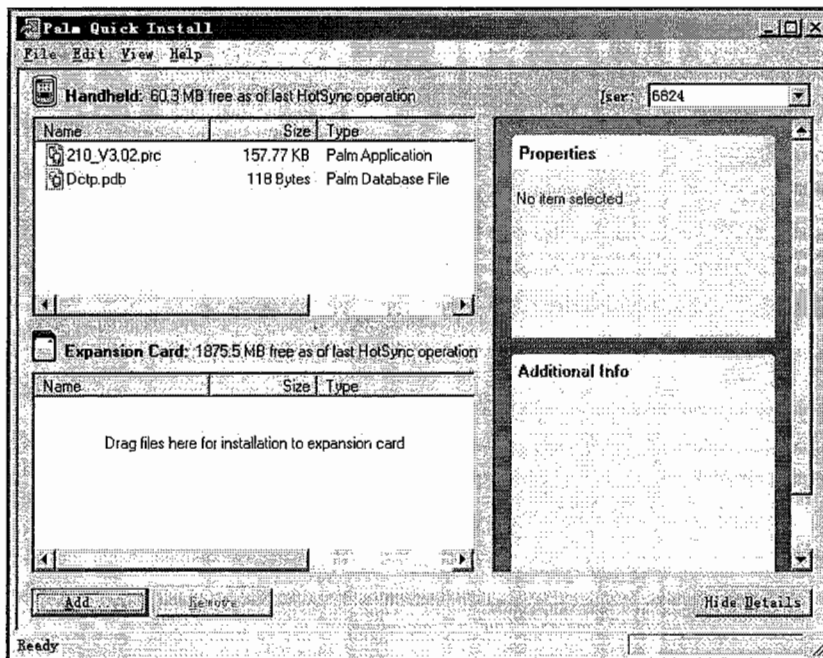
2. To do a soft reset of Palm 680, need to open the battery door and remove the battery, insert the battery after 2 seconds and cover the base, and then turn on the PDA. For more information please refer to the Palm 680 Instruction Manual.



4. For those Flowmeter kits Equipped with the Palm 680 model PDA, the data files are stored in the following directory in SD card. Remove the SD card from the PDA, connect it to the PC via the card reader, then will enter the below catalogue: palm\programs\Data. You can see four directories: 210, Display, Output, and Setup.



6. Select the corresponding user on the pop-up window and click [Add] button to install communication software application 210.prc and serial number file Dslp.pdb.



- 7. Click the HotSync icon of the PDA or press the HotSync key on the sync jack and install the application according to the clue.
- 8. For application icons displayed on the PDA after installation.



When not using the PDA for an extended period of time, or there is not enough battery charge, please recharge it in time.