

In-line Flow Conditioning Plates

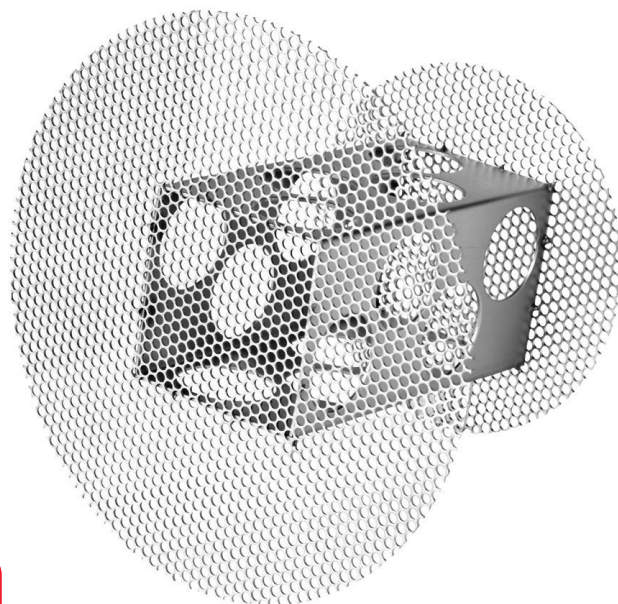
FEATURES

- Minimizes low profile irregularities caused by elbows, valves, expansions, reductions
- Significantly reduces upstream and downstream piping requirements
- Low pressure drop
- Available in sizes for 1" to 38" schedule 40 pipe (larger sizes contact factory)
- Rugged 316 ss construction
- Easy installation using customer supplied flanges



www.sierrainstruments.com

Flow Conditioning Plates



DESCRIPTION

Sierra Instruments' Flow Conditioning Plates represent an economical solution to problems associated with monitoring flow installations where long, straight runs of piping are not available.

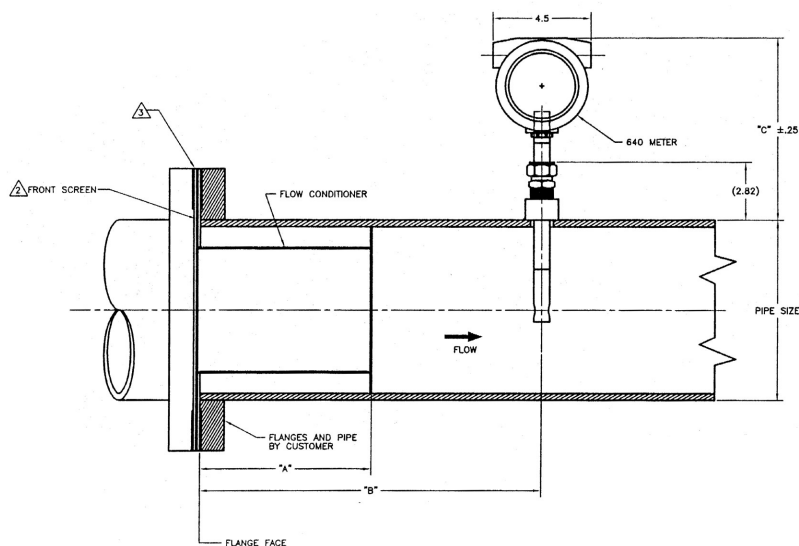
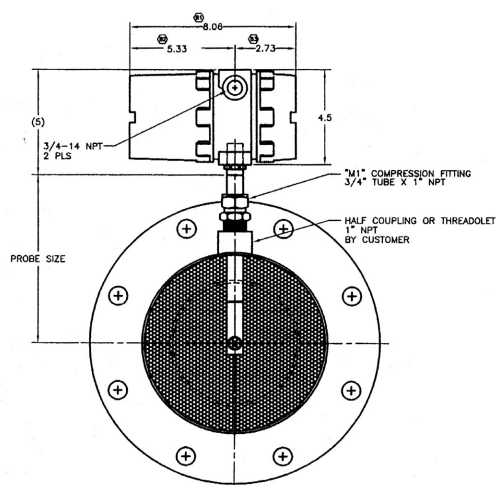
The flow conditioning element effectively eliminates velocity profile distortions, swirl and temperature stratification in the gas stream. The flow conditioner creates a uniform velocity profile by means of two stainless steel perforated plates. Designed to work in schedule 40 pipe (other schedules contact factory) with 150# flanges, the front flow conditioning screen is sandwiched between two 150# flanges, along with two 1/8" gaskets (gaskets and flanges are supplied by customer). The flange mounting bolts serve to center the screen in place.

The flow plates reduce upstream piping diameters to less than three diameters after most common flow disturbances. Extensive testing has demonstrated that this device virtually eliminates the effect of piping conditions with fewer upstream diameters than any other flow conditioning technique.

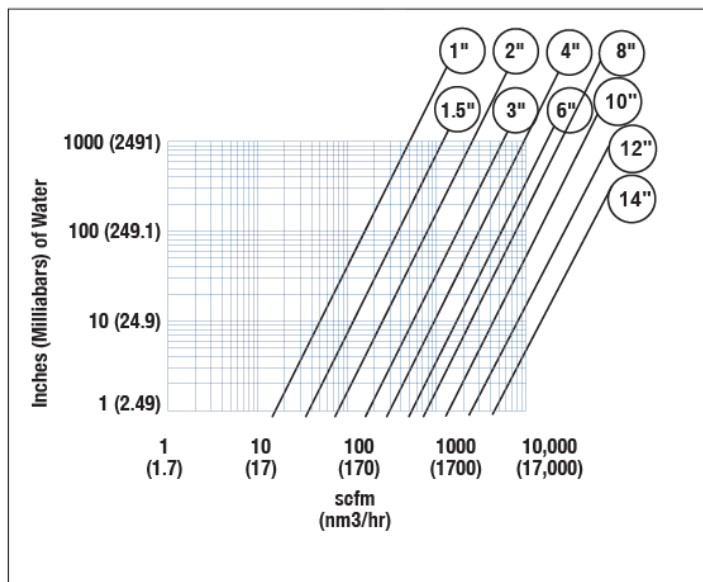
Flow plates may be purchased separately for general flow conditioning or they may be used with existing Sierra insertion meters if calibrated as a set.

The information contained herein is subject to change without notice.

Model 620S



DIMENSION CHART				
PIPE SIZE	"A" DIM	"B" DIM	"C" DIM	PROBE CODE (SIZE)
1" (1.315)	1"	2"	8.34"	L04 (4")
1.5" (1.90)	1.5"	3"	9.05"	L05 (5")
2" (2.375)	2"	4"	8.81"	L05 (5")
3" (3.50)	3"	6"	9.25"	L06 (6")
4" (4.50)	4"	8"	8.75"	L06 (6")
6" (6.6250)	6"	12"	8.69"	L07 (7")
8" (8.625)	8"	16"	8.69"	L08 (8")
10" (10.75)	10"	20"	9.62"	L10 (10")
12" (12.75)	12"	24"	8.62"	L10 (10")
14" (14.00)	14"	28"	11."	L13 (13")



Note: 10"-14" 87.1 inches of H2O @ 20,000 sfpm

REQUIRED STRAIGHT LENGTHS RELATIVE TO UPSTREAM DISTURBANCES		
	Upstream Diameters	
Disturbance	Orifice Plate	Flow Cond. Plate
One 90° Elbow	28	1
Two 90° Elbows Same Plane	36	3
Two 90° Elbows Different Planes	62	5
Reducer - 4/1	14	3
Globe Valve - Fully Open	32	2



Built-in flow conditioning creates a uniform velocity profile in constrained applications.

Sierra Instruments

North America
20 Ryan Ranch Rd, Suite 109
Monterey, California 93940
+1.831.373.0200 • sierrainstruments.com

EMEA
Bijlmansweid 2
1934RE Egmond aan den Hoef • The Netherlands
+31 72 5071400

Asia
Second Floor Building 5 • Senpu Industrial Park • 25 Hangdu
Road Hangtoun Town • Pu Dong New District • Shanghai, P.R.
China 201316 • +8621 5879 8521/22