

INSTRUCTIONS FOR INSTALLING SMART INTERFACE PROGRAM:

System Requirements:

OS: Windows XP/Vista/7

Choose your internet browser below for appropriate instructions:

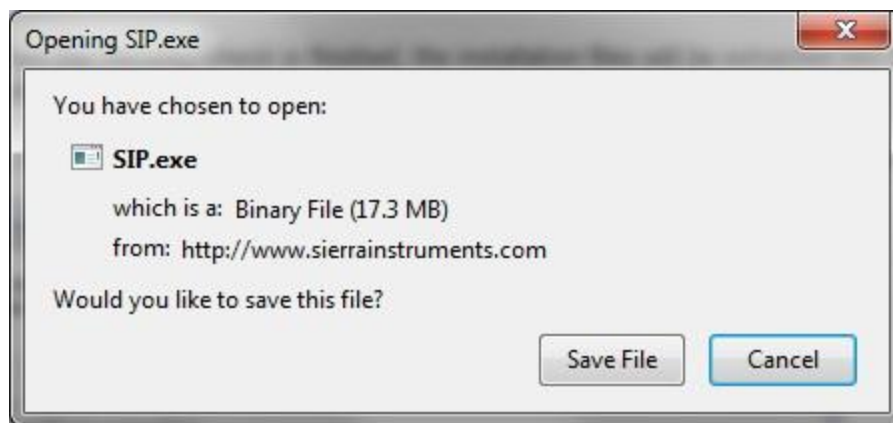
Internet Explorer Firefox

Firefox Instructions:

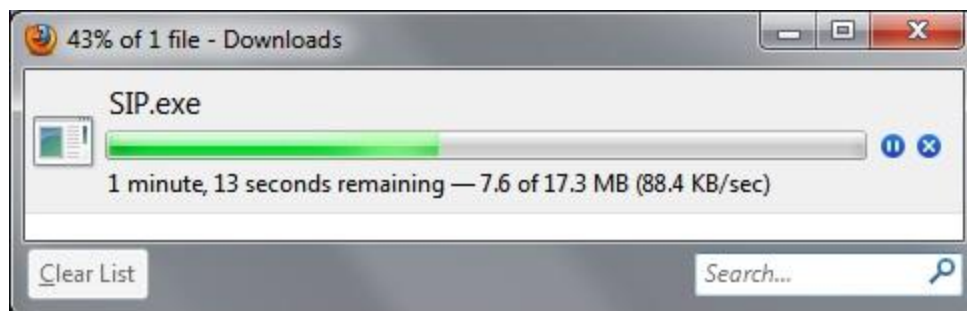
Step 1: First, connect the flow meter to your computer using instructions on Page 3 of the Quick Install Guide.

Step 2: Click on the file (SIP.exe) to begin download.

Step 3: You will receive a prompt similar to the one below. Select "**Save File**" and the download will proceed.



Step 4: A "Downloads" dialog window similar to the one below will appear alerting you to the progress of the download.



Step 5: Once the download has completed, initiate the installation by double-clicking the file in the "Downloads" dialog window.

Step 6: You will receive a prompt similar to the one below. Select "**Run**" and the installation will proceed.

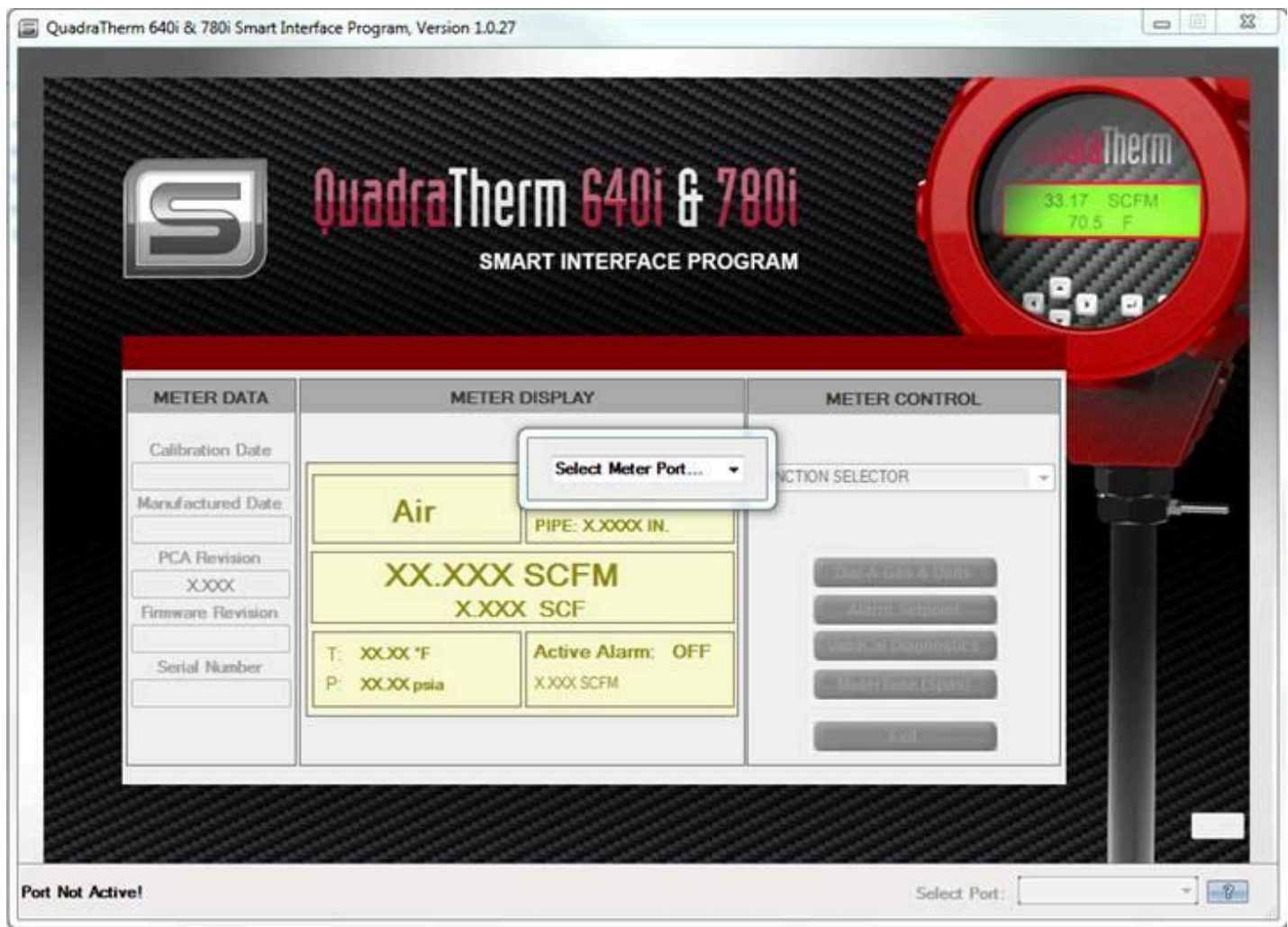


Step 5: The installation files will be extracted into the "C:\SierraInstruments\SIP\Install" directory, and the SIP application will begin installation automatically.

Step 6: As the application installs, you may receive a security warning on most Windows machines. Click "**Install**" to proceed.



Step 7: Once installed, the application will start on your computer and prompt you to connect to the flow meter by selecting the active port.



Step 8: Select the active port and all flow meter information will be read into the SIP application.

Step 9: Interaction with the instrument can now begin utilizing all of the unique features provided via the SIP application.

If you have any questions about downloading the files please contact Rory Ross at: r_ross@sierrainstruments.com



Instruction Manual
Rev. V1



Quick Install Guide
Rev. V1