

QuadraTherm[®] 640i/780i Smart Interface Portal (SIP) Software

Installation Instructions

System Requirements:

OS: Windows XP and above

Choose your internet browser below for appropriate instructions:

Internet Explorer Firefox

Internet Explorer Instructions:

Step 1: First, connect the QuadraTherm 640i/780i flow meter to your computer using instructions on Page 3 of the Quick Install Guide.

Step 2: Click on the file (SIP.exe) to begin download.

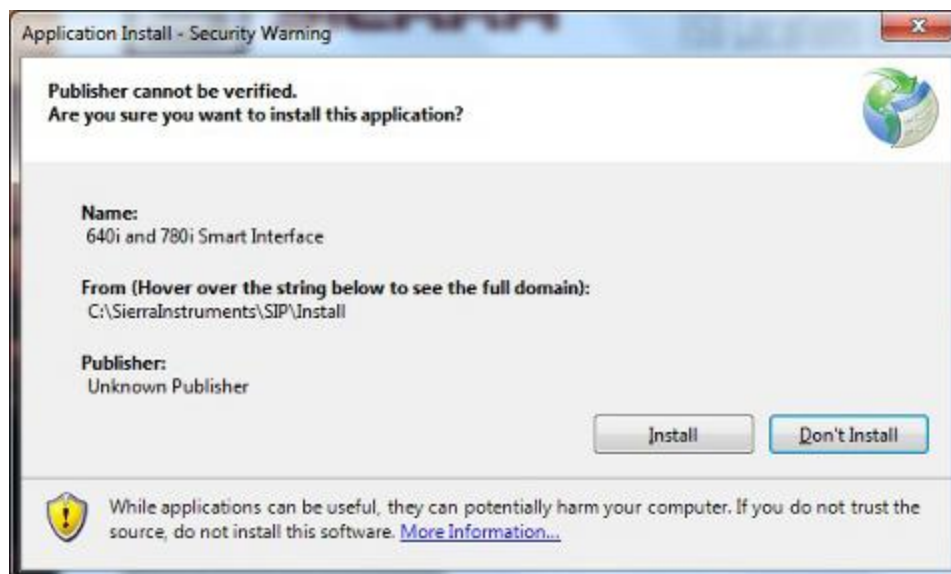
Step 3: You will receive a prompt similar to the one below. Select "**Run**" and the download will proceed.



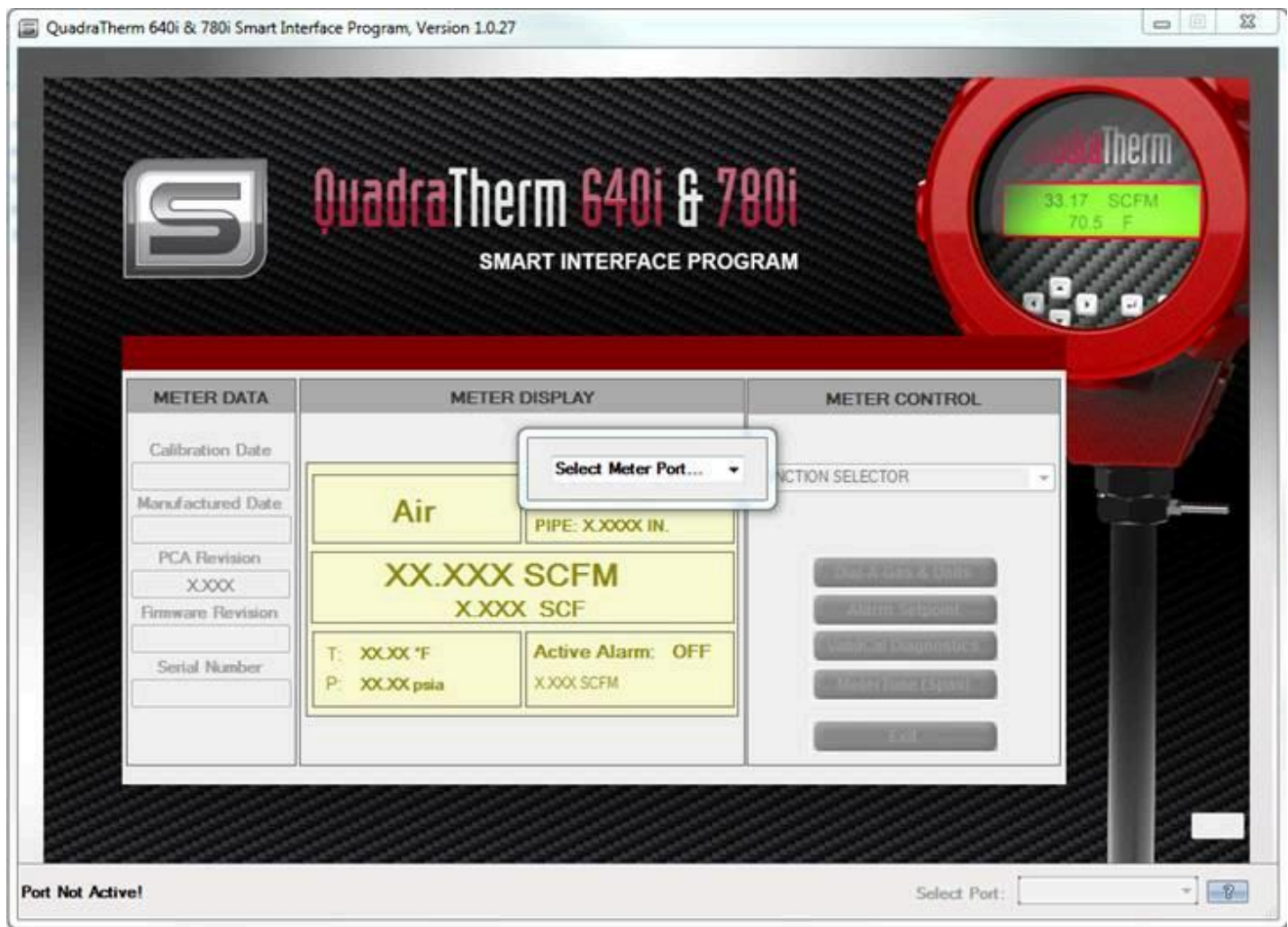
Step 4: Once the download is complete, Microsoft SmartScreen will perform a security check.

Step 5: When the Security check is finished, the installation files will be extracted into the "C:\SierraInstruments\SIP\Install" directory, and the SIP application will begin installation automatically.

Step 6: As the application installs, you may receive a security warning on most Windows machines. Click "**Install**" to proceed.



Step 7: Once installed, the application will start on your computer and prompt you to connect to the flow meter by selecting the active port.



Step 8: Select the active port and all flow meter information will be read into the SIP application.

Step 9: Interaction with the instrument can now begin utilizing all of the unique features provided via the SIP application.

If you have any questions about downloading the files please contact Rory Ross at: r_ross@sierrainstruments.com



Instruction Manual



Quick Install Guide

Download SIP